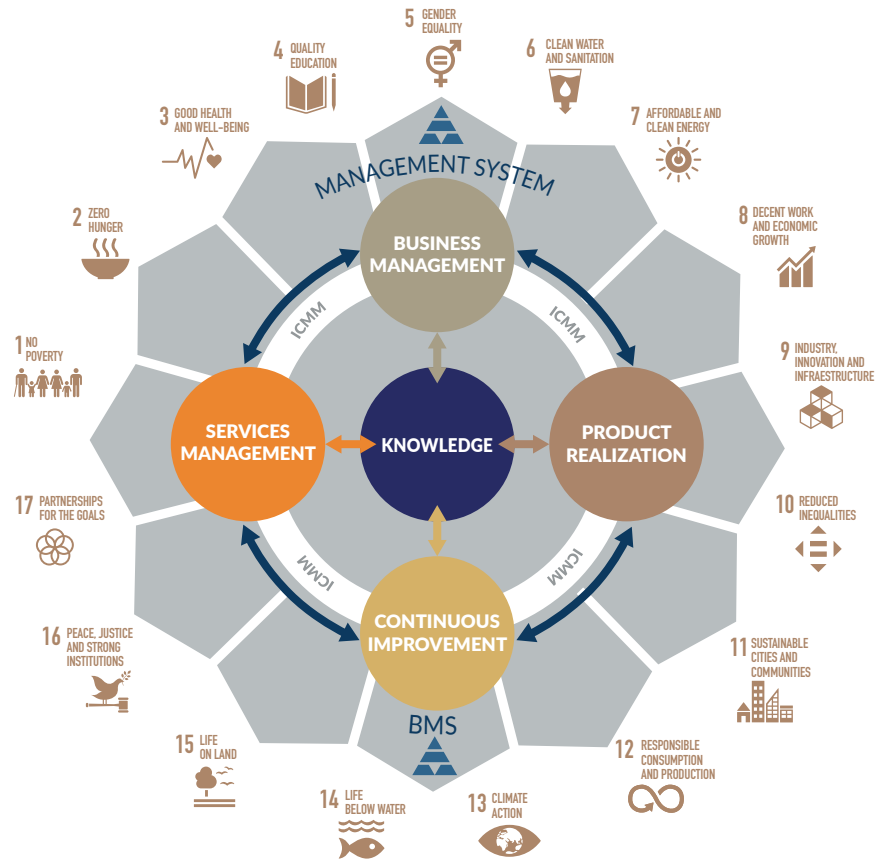


Sustainable development is fundamental to our operations and the foundation on which we are building a new way of mining in Bolivia, aimed at achieving a better future for all.

## Management Model

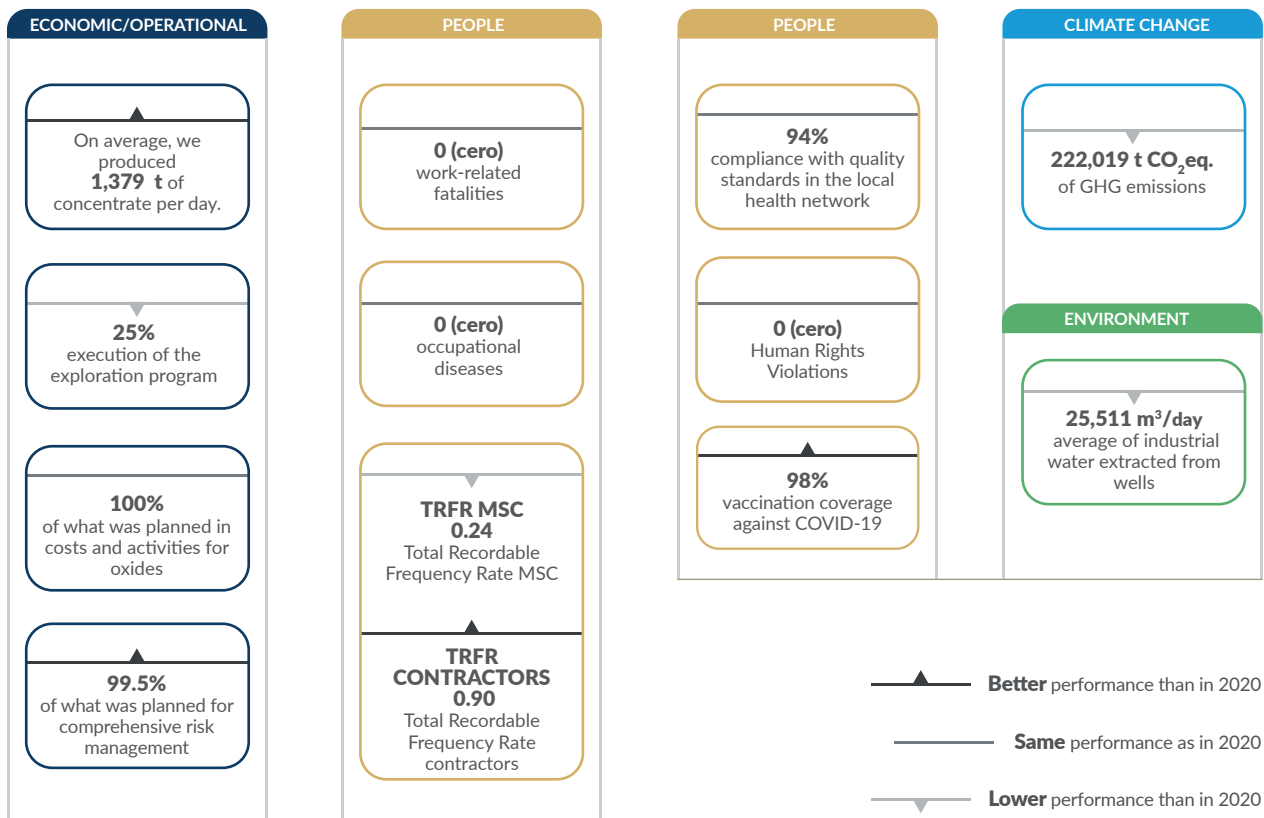
Our management system is the set of interrelated processes that, based on the efficient use of resources, seeks to achieve the strategic goals and vision of the business.

We develop a comprehensive risk management model with which we can identify, assess and manage risks and uncertainties in the face of internal and external events or scenarios that may hinder the achievement of our sustainability objectives.



## Our sustainability performance in figures

Some of our 2021 goals and achievement thereof are described below:



## Our stakeholders

We define our stakeholders as the people, groups of people, organizations and public/private institutions that affect or may be affected, positively or negatively, as a result of our activities.

Our stakeholders are:

